



564 SS Fireback Installation

Packing List

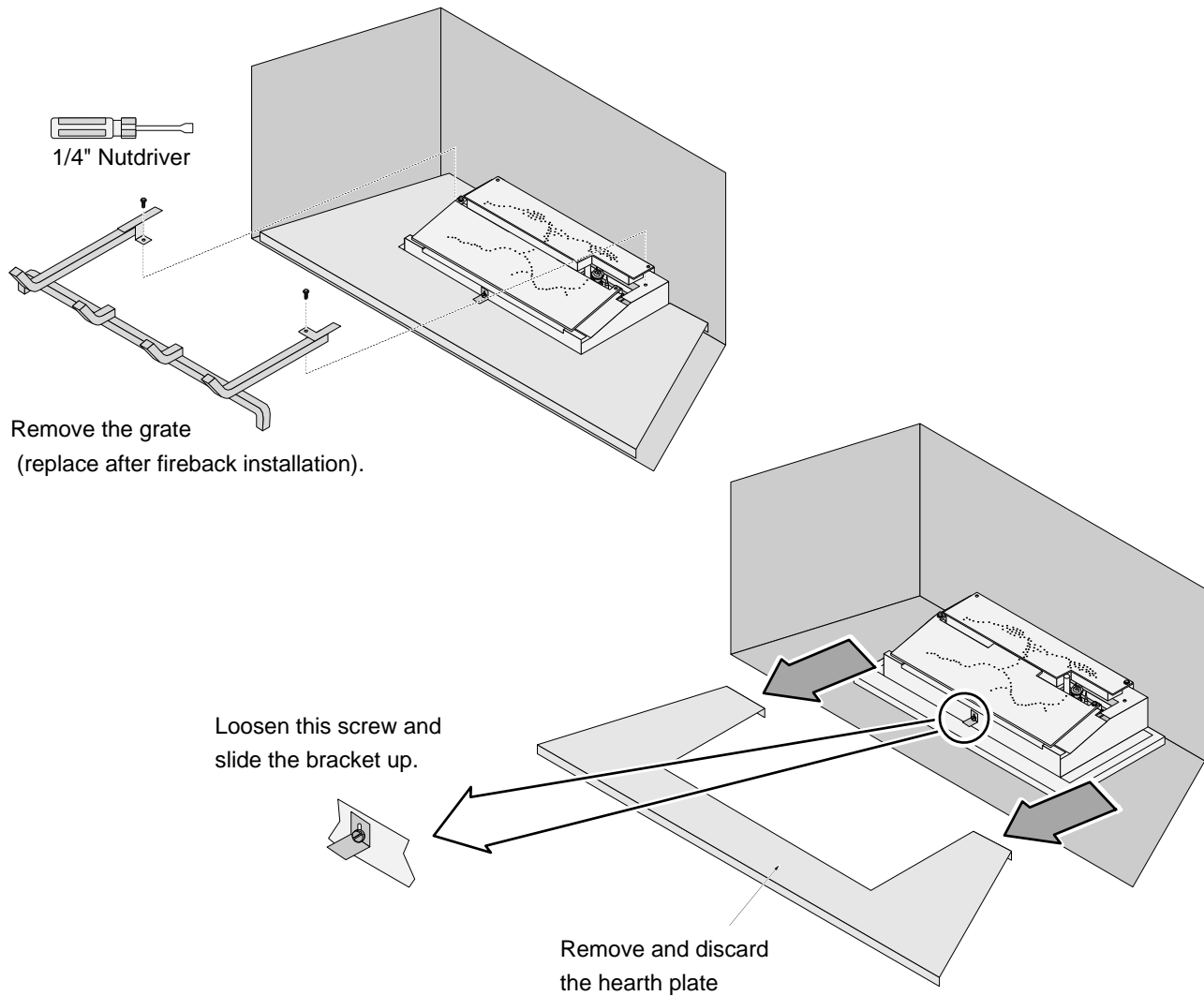
- Rear Fireback
- (2) Side Firebacks
- (2) Floor Firebacks

Installation

WARNING Turn off gas to the appliance and make sure it has fully cooled prior to conducting service.

NOTE On two-sided firebacks make sure to use the desired pattern.

- 1 Remove the glass frame and logs (see the installation manual for details).
- 2 Remove the grate (replace after fireback installation). Remove and discard the hearth plate.

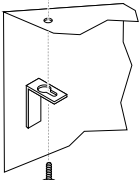




564 SS Fireback Installation

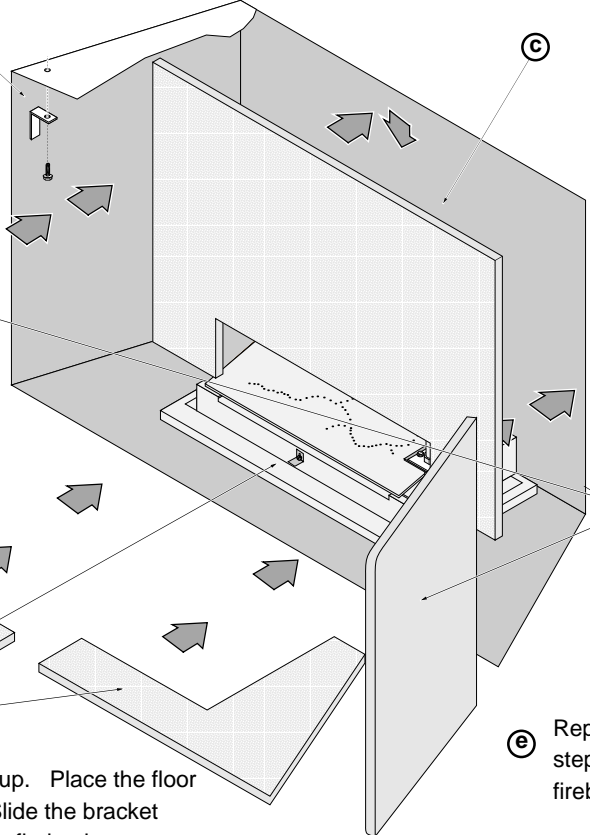
3 Install the firebacks following the directions below.

a Remove the clip located on the firebox ceiling near the front (both sides). The side fireback clip has a keyhole slot. It can be removed by loosening the screw and sliding the clip out.



Place the rear fireback in place. The side fireback holds the rear fireback in place - hold the rear fireback while installing the side fireback.

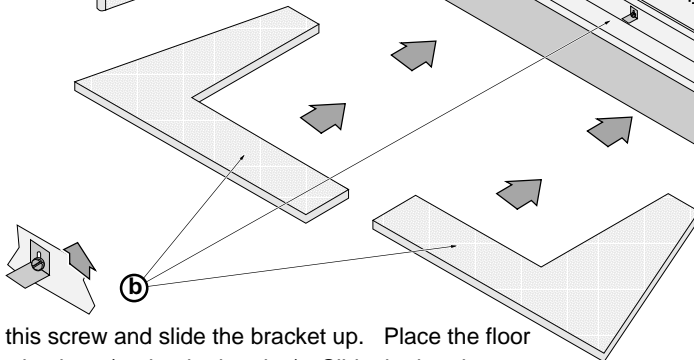
c



d Place the side firebacks in place.

e Replace the clips removed in step "a" to secure the side firebacks..

b Loosen this screw and slide the bracket up. Place the floor firebacks in place (under the bracket). Slide the bracket down and tighten the screw to secure the firebacks.



NOTE: Place the fireback so the vertical grout line on the edge of the fireback is facing the rear.

1/4" Nutdriver



Due to the construction of the ceramic firebacks, you may need to re-position the firebacks to achieve correct alignment.

4 Restore the fireplace to the correct configuration.