



Packing List

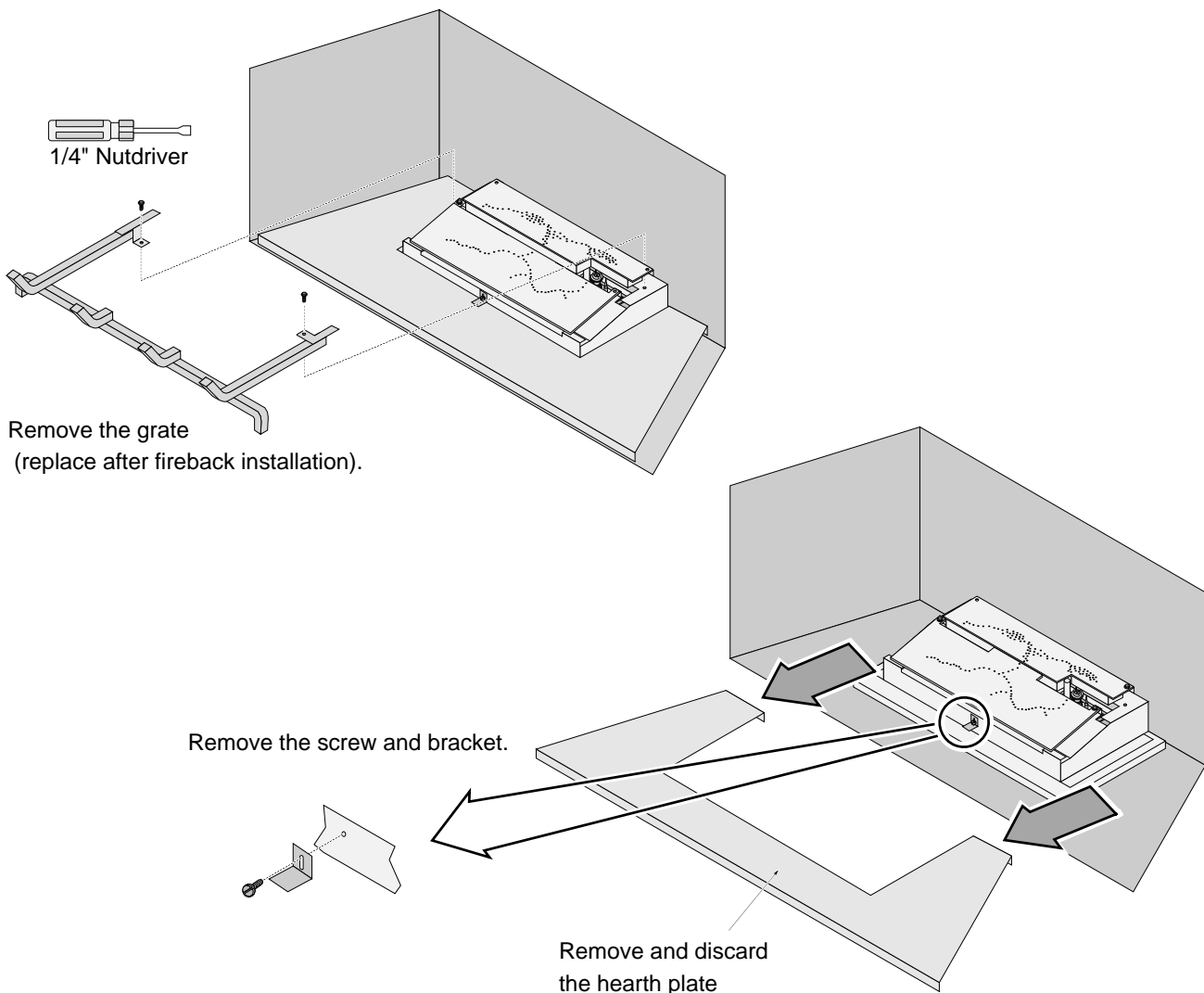
- Rear Fireback
- (2) Side Firebacks
- Floor Fireback

Installation

WARNING Turn off gas to the appliance and make sure it has fully cooled prior to conducting service.

NOTE: The firebacks are shipped in vinyl to prevent marring the surface of the stainless steel. Remove the vinyl prior to installation. **Wear clean gloves when installing the firebacks** to prevent fingerprints on the surface (or use a rag or paper towel to handle the firebacks).

- 1 Remove the glass frame and logs (see the installation manual for details).
- 2 Remove the grate (replace after fireback installation). Remove and discard the hearth plate.

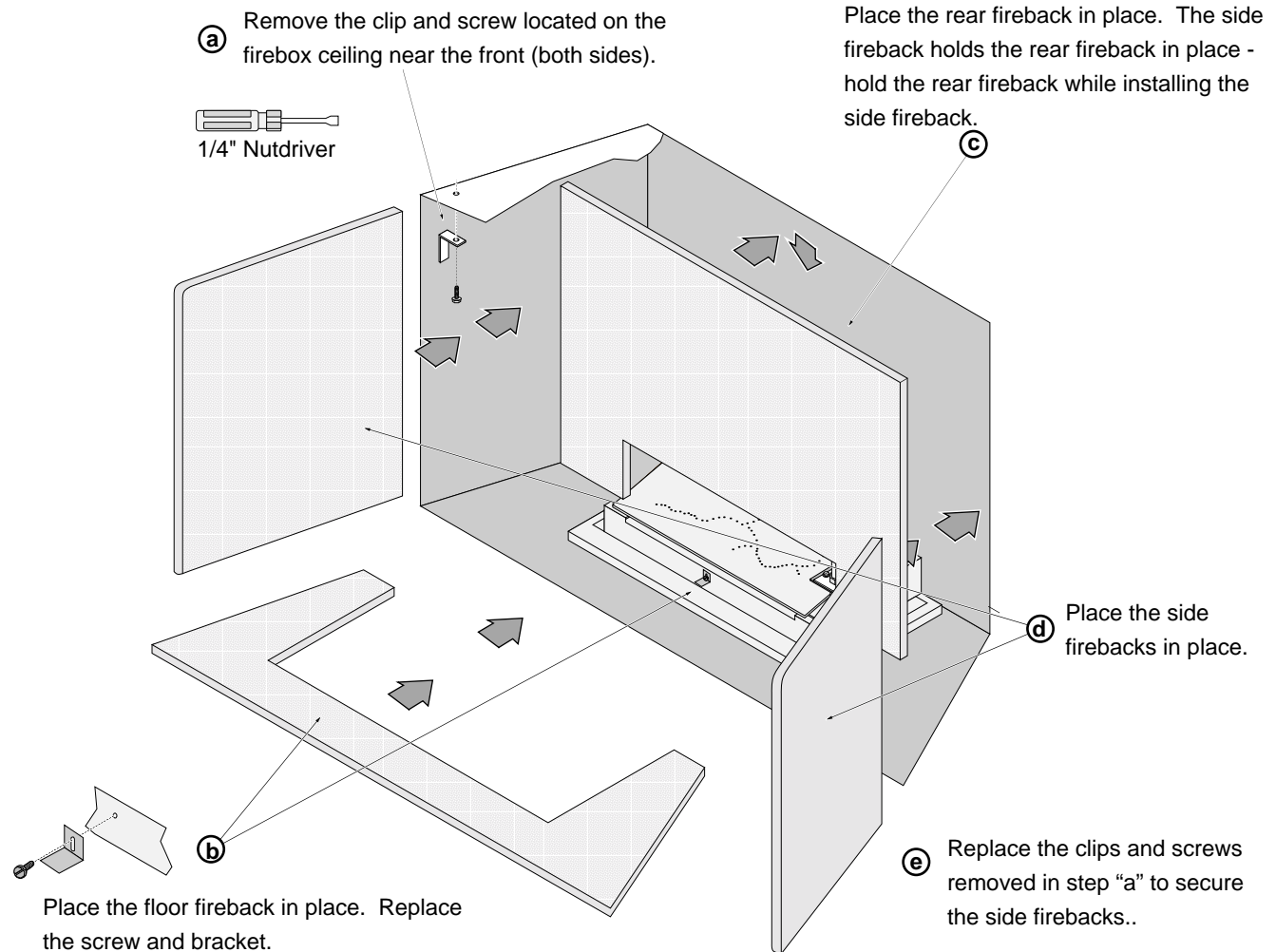




564 SS Stainless Steel Fireback Installation

SKU # 96100180

3 Install the firebacks following the directions below



COLORATION AND CLEANING: These stainless steel firebacks will obtain a slight "patina" (brown tint) after use. Do not clean the firebacks. This patina becomes consistent. Any cleaning may lead to unequal coloring. If soot forms on the fireback, we recommend brushing it off with a soft cloth or brush.

4 Restore the fireplace to the correct configuration.