



Driftwood Log Set "A" (31 DVI, DVS GSR, 564 HO) Installation Instructions (sku 94500571)

Packing List

- Log Set (Rear Log, Left Log, Right Log, Left Twig, Right Twig, Ember Chunk)

Compatibility

- 31 DVI
- DVS GSR NB with Dancing-Fyre Burner
- 564 HO with Diamond-Fyre Burner

Items Required

- A portion of a Crushed Glass Kit (each kit includes four 2.5 lb. bags):
 - Platinum (94500580)
 - Bronze (94500581)
 - Cobalt (94500582)

Installation Warnings

- **The logs are fragile, especially after being exposed to heat.**
- Make sure the gas control valve is OFF and the heater is cool prior to conducting service.
- Failure to position the parts in accordance with these diagrams or failure to use only parts specifically approved with this appliance may result in property damage or personal injury.
- The burner must be correctly positioned before installing the log set. Make sure the burner is fully seated and the pilot is properly aligned. See owner's manual for details on burner removal.

HINT: If using propane (LP), convert the appliance before installing the log set.

If using firebacks, make sure they are installed before installing the log set.

Log Set Installation

1. Place the rear log so the two holes on the bottom of the log fit over the pins on the burner. The log rests against the back wall or fireback.

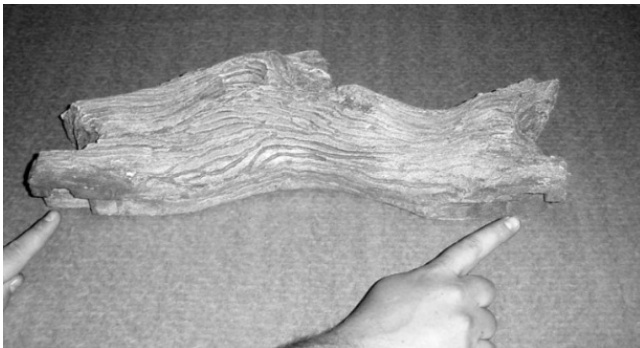


Figure 1: Rear Log



Figure 2: Rear Log Placement



Figure 3: Rear Log in Place



Driftwood Log Set "A" (31 DVI, DVS GSR, 564 HO) Installation Instructions (sku 94500571)

- Place the left log as shown below. Note how the two pins on the burner insert into the holes on the log. Make sure the log is pushed all the way back.



Figure 4: Left Log

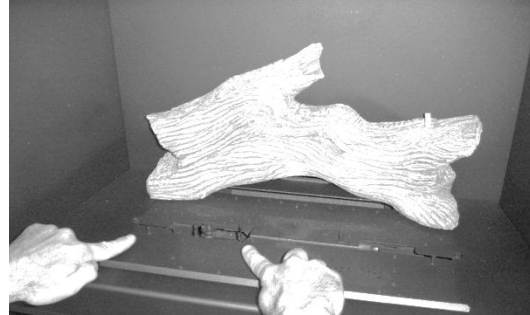


Figure 5: Left Log Placement

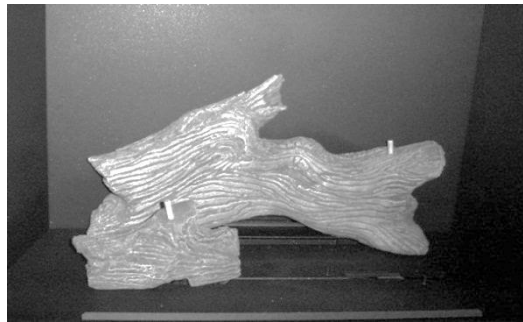


Figure 6: Left Log in Place

- The right log as shown below. Note how the two pins on the burner insert into the holes on the log.



Figure 7: Right Log

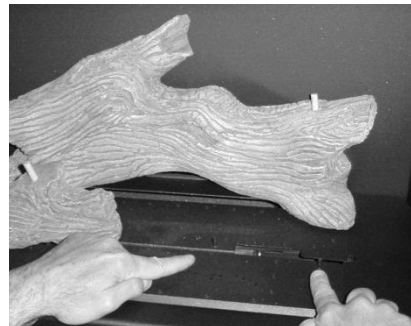


Figure 8: Right Log Placement



Figure 9: Right Log in Place



Driftwood Log Set "A" (31 DVI, DVS GSR, 564 HO) Installation Instructions (sku 94500571)

- Place the left twig as shown below. Note how the hole on the twig inserts over the pin on the left log and rests on the ember tray. When installed, the twig should have a space of about 1 inch from the rear log.

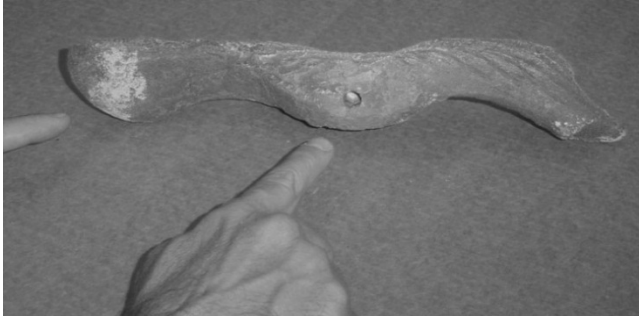


Figure 10: Left Twig

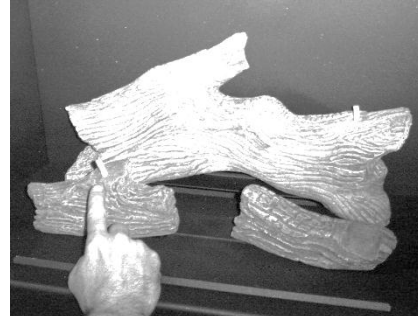


Figure 11: Left Twig Placement

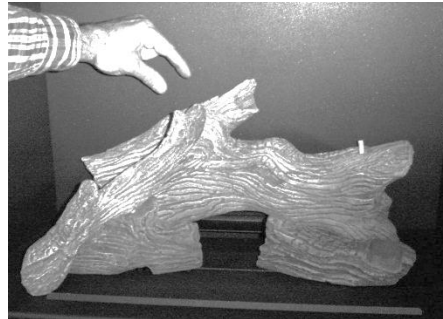


Figure 12: Left Twig in Place

- Place the right twig as shown below. Note how the hole on the twig inserts over the pin on the rear log and rests on the flat portion of the right log.



Figure 13: Right Twig

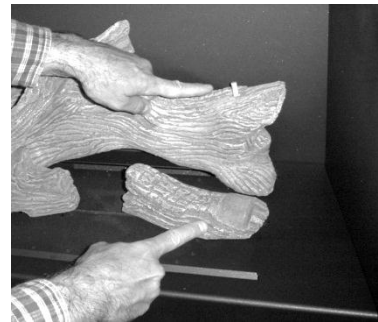


Figure 14: Right Twig Placement



Figure 15: Right Twig in Place



Driftwood Log Set "A" (31 DVI, DVS GSR, 564 HO) Installation Instructions (sku 94500571)

6. Place the ember chunk on the burner as shown below. Make sure the ember chunk does not cover any of the burner holes.

NOTE: The Ember Chunk should stand vertically in the firebox.



Figure 16: Ember Chunk



Figure 17: Ember Chunk in Place

Crushed Glass Installation

31 DVI / DVS GSR NB

This model requires 1 lb. of ¼" American Fireglass Crushed Glass

Measuring Glass

Use 1 Rounded Cup (240ml rounded)

NOTE: A level measuring cup (240ml) = 0.95 lbs.,
so each cup should be slightly rounded.



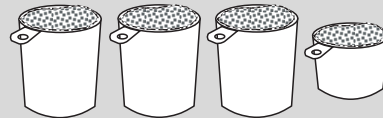
564 HO

This model requires 3.5 lbs. of ¼" American Fireglass Crushed Glass

Measuring Glass

Use 3-1/2 Rounded Cups (240ml rounded)
(one 2.5 lb. bag plus 1 Cup)

NOTE: A level measuring cup (240ml) = 0.95 lbs.,
so each cup should be slightly rounded.



It is better to use too little glass than too much. Excessive glass, especially when using propane (LP), will lead to sooting. Place the glass as thinly as possible over the burner ports for optimum burner performance.



TRAVIS INDUSTRIES
HOUSE OF FIRE

Driftwood Log Set "A" (31 DVI, DVS GSR, 564 HO) Installation Instructions (sku 94500571)

Carefully pour the glass around the floor of the firebox as shown below. Now we are working with your inner artist. Here you must pay attention to create the best possible look. For hard to reach areas, you can use a teaspoon to ensure all black surfaces are covered.

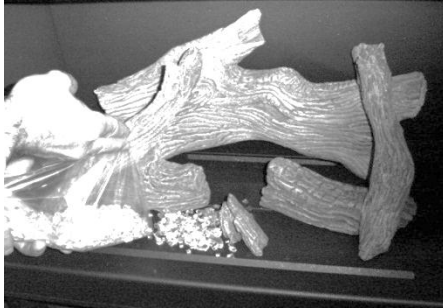


Figure 18: Pouring Crushed Glass



Figure 19: Spreading Crushed Glass



Figure 20: Completed Log Installation

WARNING: Make sure the glass is a maximum 1 layer thick (NG can be up to 2 layers). If the glass is too thick it will impair burner performance and create soot.

WARNING: Make sure the pilot is not covered with glass. Clear away glass, if necessary, to ensure the pilot flame lights the burner quickly.

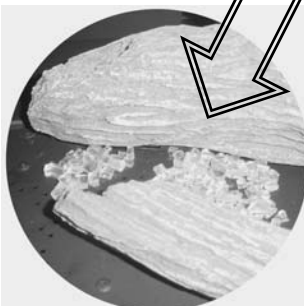
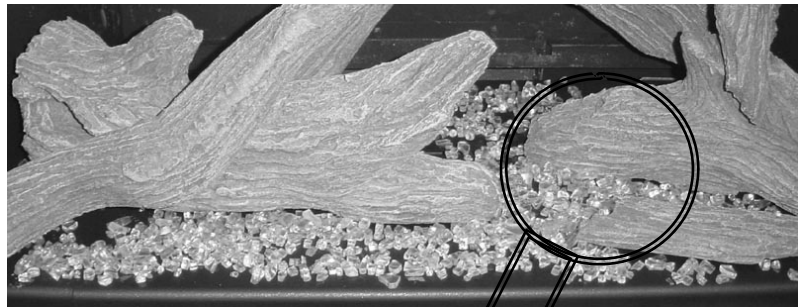


Figure 21: Glass Thickness